

054301

RECEIVED
LARAMIE COUNTY
CHEYENNE, WY.

CERTIFIED LAND CORNER RECORDATION

'89 FEB 17 AM 10 25

DESCRIPTION OF CORNER EVIDENCE FOUND, AND ORIGINAL RECORD (If known)

1/4
S.21 S.22
T.13N., R.70W.
6th P.M.

Found no evidence of previous monumentation.

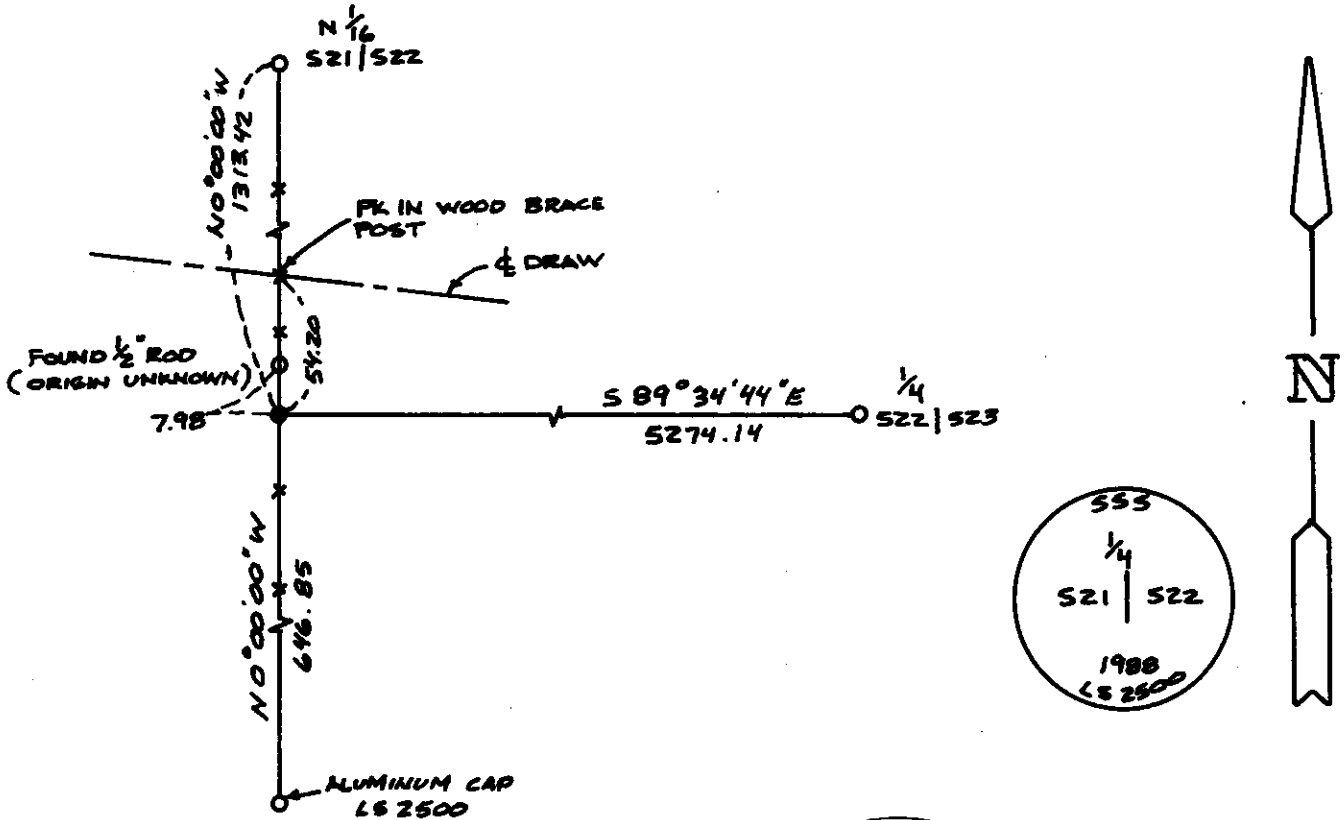
G.L.O. Record: Granite boulder 18"x10"x6" set by J. Wesley Hammond, October 22, 1872.

DESCRIPTION OF MONUMENT AND ACCESSORIES ESTABLISHED TO PERPETUATE THE ORIGINAL LOCATION OF THIS CORNER:

At the corner: Set 5/8"x18" rebar with 2" Aluminum Cap stamped as shown below at proportionate distance in North South fence line.

Accessories : See ties below.

SKETCH, WITH COURSE AND DISTANCE TO ADJACENT CORNER IF DETERMINED IN THIS SURVEY. (May Sketch or Paste Reproduction on Reverse Side.)



I, John A. Steil certify that I have carefully performed or reviewed the work done on the diagrammed corner as reported on this recordation form and approve the same.

Professional Land Surveyor
 JOHN A. STEIL
 2500
 Signature of Surveyor: John A. Steil L.S. 2500
 Registration No.
 Date: 2-12-89
 WYOMING

STATE OF WYOMING,
Office of Clerk and Recorder,
County of _____

This "corner record" was filed for record on the _____ day of _____, 19____, was noted on the cross-index plat and is assigned page No. _____, in book No. _____

Joseph C. Whitcomb
County Official

Cross Index No.	P-13	T. 13N	R. 70W	Mer. 6th
				Mer.
				Mer.
				Mer.
				Mer.
				Mer.
				Mer.